

# Hebblethwaites

Chartered Accountants & Registered Auditors



ICAEW  
CHARTERED  
ACCOUNTANTS



KEY GUIDE

# Investing tax efficiently

# Introduction

## THE COMPLEX WORLD OF TAX ON INVESTMENT

The way that investments are taxed has changed over recent years as successive governments have chosen to handle various sources of investment income in different ways. The aim has typically been to increase tax revenues.

Alongside this, the whole tax system has grown increasingly elaborate, thanks to revenue-raising tweaks such as the taxation of child benefit and multiple reforms of dividend taxation. The situation was highlighted in a paper on savings tax from the government's own Office of Tax Simplification published in May 2018. This noted that, "the interactions between the rates and allowances is sufficiently complex at the margins that HMRC's self-assessment computer software has sometimes failed to get it right".

This guide offers a brief outline of how your investments are currently taxed. If, as seems likely, there is an election before the end of the year, there is some likelihood that the tax rules could change, not necessarily for the better. Expert advice is necessary if you require more information or a greater insight into how to cut your tax bill now.

---

## Contents



### TAXING YOUR INVESTMENT INCOME

---

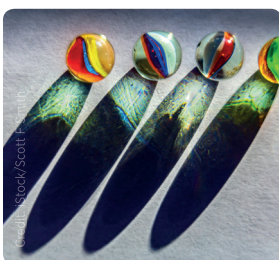
How income from your savings and dividends is taxed



### CAPITAL GAINS

---

The principles and opportunities around capital gains tax



### LIFE ASSURANCE -LINKED INVESTMENT BONDS

---

Cutting through the taxation confusion



### EASING THE INVESTMENT TAX BURDEN

---

The investment options you can use to invest tax efficiently

This publication is for general information only and is not intended to be advice to any specific person. You are recommended to seek competent professional advice before taking or refraining from taking any action on the basis of the contents of this publication. The Financial Conduct Authority (FCA) does not regulate tax advice, so it is outside the investment protection rules of the Financial Services and Markets Act and the Financial Services Compensation Scheme. This publication represents our understanding of law and HM Revenue & Customs as at 23 September 2019.



# How your investment income is taxed

Income from investments is generally taxed less than earnings, because there is no liability to national insurance contributions (NICs). However, there have been several proposals from outside the current government for income tax and NICs to be combined and for the newly merged tax to be applied to all income.

The personal savings allowance was introduced in 2016/17 at the rate of £1,000 for basic rate taxpayers and £500 for higher rate taxpayers (based on UK tax bands, including Scottish residents). Both basic and higher rate taxpayers can save up to £200 tax on savings income (primarily interest), but there is no allowance for additional rate taxpayers.

The dividend allowance was also introduced in 2016/17, at the rate of £5,000 for all taxpayers, but was reduced to £2,000 in 2018/19 and remains at that level in 2019/20. Above the dividend allowance, the effective rate of tax on dividends has increased by 7.5% over the last four years.

Both the dividend allowance and savings allowance behave like nil rate tax bands. As a result, each allowance applies to the lowest tier of relevant income and that income is considered in the assessment of your total income, for example in determining whether you are liable to pay higher rate tax. The result is a further complication in the rules for tax calculations.

## Planning point

Take expert advice if you require more information or a greater insight into how to cut your tax bill.

Many investments can be purchased in ISA tax wrappers, which can shield your money from certain taxes. ISAs will probably make up a key element of your investment plan.

### Interest income

Interest from UK deposits is no longer paid net of basic rate (20%) tax because of the introduction of the personal savings allowance.

Deposits with offshore banks, such as those in the Channel Islands, also normally pay interest with no tax deducted. But the income is taxable in the UK if you are domiciled here and will need to be reported to HM Revenue & Customs (HMRC). If you do not report overseas interest to HMRC, there is a good chance that the bank or deposit-taker will report it under the new global Common Reporting Standard which came into full effect from September 2018.

The ending of deduction of basic rate tax at source was designed to make life simple for most taxpayers, who would otherwise have had to reclaim small amounts of tax because their interest would fall within the newly introduced personal savings allowance. However, if your interest income exceeds your personal savings allowance, matters become more complicated:

- You can allow HMRC to collect the estimated tax due by adjusting your Pay As You Earn (PAYE) code, if you have one. However, this will use historic data. For example, in calculating your 2019/20 PAYE code HMRC will take account of interest you earned in 2017/18.
- Alternatively, on your self-assessment tax return you can request that estimated tax is not collected, in which case your liability will fall within the usual self-assessment

payment procedure. This means payment will be made later than under the PAYE coding route, but you might face a large one-off demand.

Interest from directly owned, fixed-interest securities, such as government bonds (gilts), is usually paid without deduction of tax and you must report it to HMRC. When the nominal value of all your direct holdings exceeds £5,000, you will have to adjust after sale and purchase for any interest you have accrued.

If you invest in fixed-interest securities through a UK-based unit trust or open-ended investment company (OEIC), the income payments you receive are now made without deduction of tax.

### Planning point

When the nominal value of all your direct holdings exceeds £5,000, you will have to adjust after sale and purchase for any interest you have accrued.

### Dividend income

The tax treatment of dividend income from shares, and funds that invest in shares, has grown more complicated over the years, and the tax rates have become divorced from the rates that apply to other income. In 2016/17 there was an overhaul, mainly aimed at discouraging incorporation by small businesses. A further change was made in 2018/19, with the same target of incorporation, but this time catching an increased number of ordinary investors.

Many recipients of modest dividend income do not pay more tax because of this overhaul. However, the cut to the dividend allowance means those with high dividend income may now be paying a lot more tax compared to 2015/16.

### Dividend taxation above the dividend allowance in 2019/20

Income tax rate	Nil	Basic	Higher	Additional
Tax due	0%	7.5%	32.5%	38.1%

Dividends from UK companies, unit trusts and OEICs are tax-free up to your dividend allowance of £2,000, regardless of your personal tax rate. Beyond the allowance, rates are as shown in the table above.

An advantage of dividend income that is often overlooked is that each £1 net income represents a smaller amount of gross income than either interest or earnings.

### EXAMPLE Dividend taxation

Bill is a higher rate (40%) taxpayer in England who has no remaining dividend allowance when he receives a dividend cheque for £100. As the table above shows, he will have an extra tax liability of £32.50 leaving him with a net income of £67.50. Bill's gross dividend income from this payment will be £100. To achieve the same net income from an interest-paying investment would require gross interest of £112.50 ( $£112.50 \times (100\% - 40\%) = £67.50$ ). The lower gross income result can be important because of the various tax thresholds that take gross income into account (e.g. pension annual allowance tapering).

### Property income

You will generally receive income from direct investment in property, such as buy-to-let, with no deduction of tax. There are extensive rules about what expenses you can offset against rents to determine how much of your income is subject



to tax. Before the 2017/18 tax year, this meant that private investors were able to offset the full interest paid on borrowing to purchase residential property. As a result, there was often little or no tax to pay, because the rent less expenses (e.g. agents' fees) was roughly the same amount as mortgage interest.

A phased change to the rules on the treatment of interest started in 2017/18 and will end from the beginning of the 2020/21 tax year. From then, there will be no offset allowed, but instead a basic rate tax credit given for interest paid. This effectively halves the amount of tax relief available to higher rate taxpayers from 2020/21. For the current tax year, a quarter of interest is set against rent, with the balance qualifying for the 20% tax credit.

The move to a tax credit approach means an increase in total income for tax purposes, which might trigger more tax payments (e.g. because the personal allowance phasing-out threshold of £100,000 is crossed).

Certain types of property income are subject to additional rules, such as furnished holiday lets, distributions from real estate investment trusts (REITs) and property authorised investment funds (PAIFs).

#### Planning point

A new structure for tax relief for property investors will have been phased in by 6 April 2021.

### LIFE ASSURANCE-LINKED INVESTMENT BONDS

The tax treatment of single premium life assurance investment bonds often causes confusion, not least because profits are described as 'chargeable gains', but also because they are actually taxable as miscellaneous income. The basic tax regime can be summarised as follows:

- **The 5% rule.** For each of the first 20 policy years after payment of a premium, there is a credit of 5%, which you can offset against any amount you withdraw. If you do not

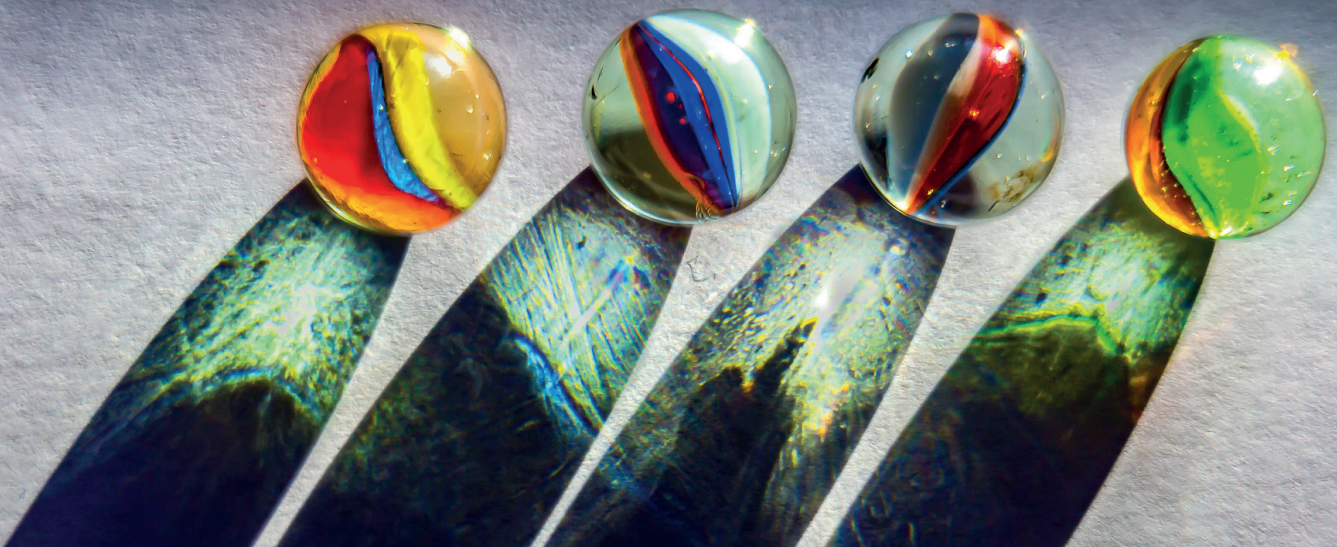
use the credit, it is carried forward to following years. If your withdrawals exceed the accumulated credit in a year, the excess is treated as income at the end of the policy year.

- **Full surrender and death.** When a policy ends because of a full surrender or the death of the last life assured, there is a 'sweeping up' calculation. The taxable gain in the tax year of death/surrender is then calculated as the total payments from the bond less all premiums paid in. You also deduct any earlier taxable excesses. This calculation brings any payments that have previously benefited from the 5% rule into tax.
- **Tax rate(s).** Gains are treated as the top part of your income (above dividends). For UK investment bonds, a basic rate tax credit (at 20%) is allowed, reflecting the fact that the insurance company has paid tax on the income and gains. Offshore policies are effectively free of UK tax on the underlying income and gains, and therefore do not benefit from the basic rate credit on encashment when the full income tax rates apply (including the starting rate band at 0% and the personal savings allowance).
- **Top slicing.** If the addition of policy gains pushes you into higher or additional rate income tax, top slicing relief can reduce your liability by treating the gain as spread over a period of years, which in most cases will be the time you have held the investment.

You should always seek advice before withdrawing any money from investment bonds, because the government has recently made a technical reform in this complex area. Their structure – for example, one bond could be 1,000 individual policies – can create serious tax traps.

#### Planning point

Investment bonds generally require a lump sum investment of at least £5,000 and you should expect to have your money tied up for at least five years.



### EXAMPLE

#### Investment bond tax calculation

Brian arranged a £10,000 UK investment bond in January 2010. He took £500 withdrawals each year in May, starting in 2010. These were within the 5% rule and gave no rise to an immediate tax charge. In December 2019 he surrenders the bond for £9,850. The final chargeable gain on the bond is calculated as:

Surrender proceeds:	£9,850
Total withdrawals: 10 x £500	<u>£5,000</u>
Total policy proceeds	£14,850
Less	
Previous chargeable gains:	nil
Total invested	<u>(£10,000)</u>
	(£10,000)
Chargeable gain on surrender	£4,850

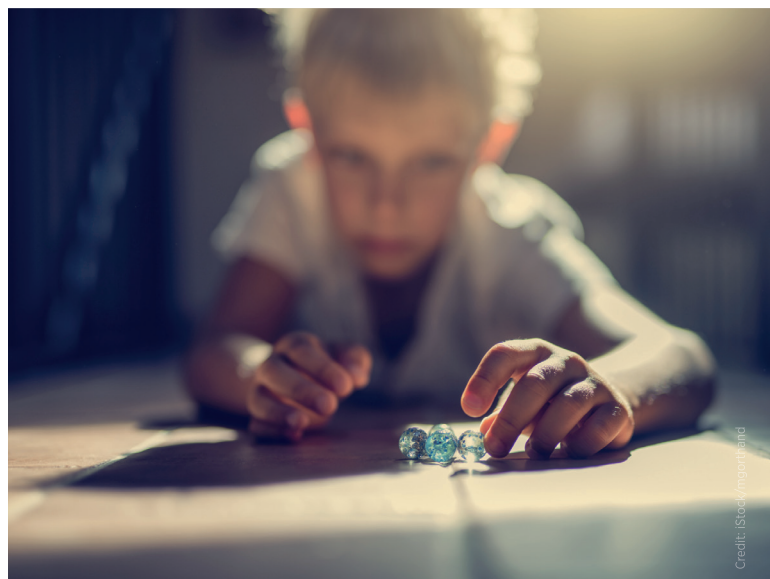
As Brian has total income of around £60,000, he is a higher rate taxpayer and will have to pay 20% tax (40% – 20% basic rate credit) on the gain, giving him a tax bill of £970. Top slicing relief (over nine years) does not affect Brian, because he is a long way from the starting point of the additional rate band.

## CAPITAL GAINS

In most circumstances, capital gains are taxed more lightly than income, particularly if net realised gains fall within the annual exempt amount of £12,000 in 2019/20 or you are a higher or additional rate taxpayer. Not all investments are subject to capital gains tax (CGT). For example, gilts and most other fixed-interest securities are exempt, but unit trusts and OEICs that invest in them are not.

The basic principles of CGT are now:

- Most disposals of investments – gifts as well as sales – trigger the need for a CGT calculation. Transfers to your spouse or civil partner are effectively ignored, provided you are living together.
- Gains and losses are calculated simply as the net value realised less the total acquisition costs.
- Gains and losses you realise in the same tax year are netted off each other. If any losses are unused, you can carry them forward indefinitely until you need to use them. In general, you must claim the loss within four years of the tax year in which it arose.
- The annual exempt amount allows you to realise £12,000 of net gains free of CGT in 2019/20. The allowance normally rises annually in line with consumer price index (CPI) inflation.



- If your net gains in a tax year exceed both your annual exempt amount and any carried forward losses you have available, the excess is added to your income. CGT is charged at 10% where gains fall below the higher rate band and 20% otherwise. An exception applies to gains from residential property, where rates are 8% higher. In all instances, the CGT rate is comfortably below higher or additional rate income tax.
- Any potential CGT liability on unrealised gains is usually extinguished on death.
- CGT is payable by 31 January in the tax year after the gain is realised, eg 31 January 2021 for gains realised in 2019/20.

From 2020/21 three important changes for CGT on residential property take effect:

- Any CGT on residential property gains will be due within 30 days of sale completion.
- The CGT exemption for a main residence will only extend to nine months after moving out, halving the current eighteen-month period.
- New rules will apply to lettings relief, limiting eligibility to those instances where the property owner shared occupation with the tenant.

### Planning point

You should think about the timing when disposing of any chargeable assets, as you may be able to take advantage of spreading gains or losses across different tax years

**EXAMPLE****Capital gains and capital losses**

Florence is a higher rate taxpayer and she needs to realise some of her investments in the first half of 2020 to top up the Bank of Mum and Dad. She is thinking of selling an oil company shareholding that has an unrealised gain of £14,000 and disposing of some utility shares, which are showing a loss of £8,000.

- If she sells all her holdings in 2019/20, her net gain will be £6,000 (£14,000 - £8,000) and she will have no capital gains tax to pay because of her £12,000 annual exempt amount. However, the £6,000 of unused exemption cannot be carried forward to 2020/21 and will be lost.
- Alternatively, she could sell all the oil company shareholding and enough of the utility shares (a quarter of her holding) to realise a £2,000 loss. Her net gain would then match her full annual exemption (£14,000 - £2,000 = £12,000) and she would still have unrealised losses of £6,000 she could use by selling the remaining utility shares after 2019/20 ends.

**EASING THE INVESTMENT TAX BURDEN**

There are many ways of reducing the burden of tax on your investments, but you should always take professional advice before acting.

- **Stocks and shares individual savings accounts (ISAs)** offer freedom from CGT, and freedom from UK tax liability on interest from fixed-interest securities and on dividends. Interest on cash is free of UK tax in all ISAs.
- **Cash ISAs** provide deposits with tax-free interest.
- **Lifetime ISAs (LISAs)** offer the same tax advantages as other ISAs, with the added benefit of a 25% government bonus on savings. However, eligibility is limited to those aged 18-39 and there are penalties on withdrawal before the age of 60 unless funds are used to purchase a first home.
- **Onshore collective funds**, such as unit trusts and OEICs, can be useful in CGT planning because changes to the underlying fund do not give rise to any immediate tax liability for the investor.
- **Non-reporting offshore collective funds** can offer some shelter from income tax, but at the cost of all gains being taxed as income.

- **Pension arrangements** have a wide variety of tax benefits, including full income tax relief on contributions. Within a pension plan there is no UK liability to tax on income or gains, and 25% of the accumulated fund is currently free of any tax after you have reached age 55, whether the whole value is taken as a lump sum or the remaining 75% is used to provide retirement income.
- **Life assurance-based investments**, both on- and offshore based, may save tax if you are a higher or additional rate taxpayer, or if you are a basic rate taxpayer with substantial dividend income.
- **National Savings & Investments** used to offer a wide range of tax-free investment products. However, at the time of writing its tax-free range is limited to a cash ISA, a cash JISA and Premium Bonds, although the last of these hardly counts as an investment.

Information is based on our current understanding of taxation legislation and regulations.

**HOW WE CAN HELP**

We can help with your investment tax planning in several ways:

- Selecting the most appropriate tax 'wrapper' for your investments.
- Advising you on the most effective tax strategies for drawing income and/or capital from your holdings.
- Keeping you up to date with the opportunities and dangers created by inevitable changes to investment tax legislation.

# Hebblethwaites

Chartered Accountants & Registered Auditors



## **Hebblethwaites**

2 Westbrook Court  
Sharrow Vale Road  
Sheffield S11 8YZ  
Tel: 0114 266 4518  
Fax: 0114 268 3842

## **Partners**

A. Throssell, F.C.A.  
R. F. Brennan, F.C.A.  
R.W. Murdoch, F.C.A.  
J.R.J. Longley A.C.A.

Registered to carry on audit work in the UK by the  
Institute of Chartered Accountants in England and Wales